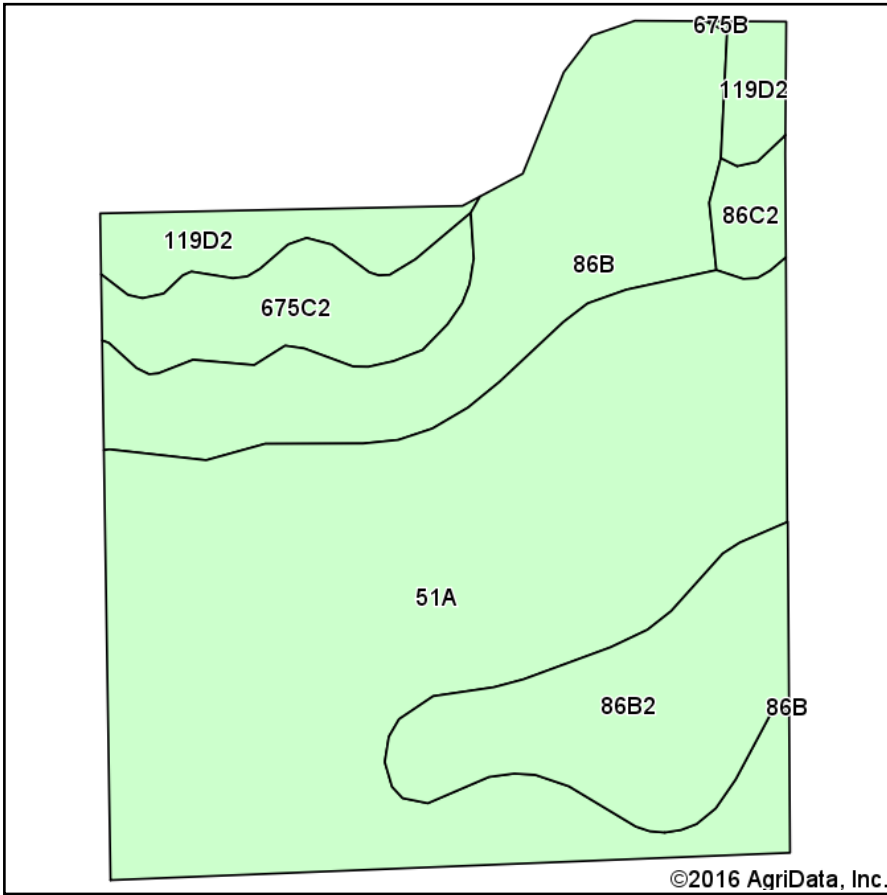
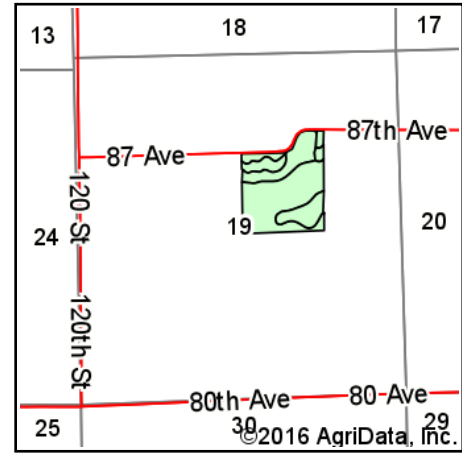


Soils Map



Soils data provided by USDA and NRCS.



State: **Illinois**
 County: **Warren**
 Location: **19-9N-1W**
 Township: **Berwick**
 Acres: **41.91**
 Date: **10/6/2016**

VAN ADKISSON
AUCTION SERVICE LLC
 ROSEVILLE, IL 61473 - PH. (309)426-2000
 www.bliddersandbuyers.com
 IL License #440.000120

Maps Provided By:

 CUSTOMIZED ONLINE MAPPING
 © AgriData, Inc. 2016 www.AgriDataInc.com



Area Symbol: IL187, Soil Area Version: 9

Code	Soil Description	Acres	Percent of field	Il. State Productivity Index Legend	Corn Bu/A	Soybeans Bu/A	Crop productivity index for optimum management
51A	Muscataune silt loam, 0 to 2 percent slopes	22.93	54.7%		200	64	147
**86B	Oscosilt loam, 2 to 5 percent slopes	7.82	18.7%		**189	**59	**140
**86B2	Oscosilt loam, 2 to 5 percent slopes, eroded	5.18	12.4%		**181	**57	**134
**675C2	Greenbush silt loam, 5 to 10 percent slopes, eroded	2.83	6.8%		**171	**54	**125
**119D2	Elco silt loam, 10 to 18 percent slopes, eroded	2.44	5.8%		**134	**44	**100
**86C2	Oscosilt loam, 5 to 10 percent slopes, eroded	0.71	1.7%		**178	**56	**131
Weighted Average					189.4	60.2	139.6

Area Symbol: IL187, Soil Area Version: 9

Table: Optimum Crop Productivity Ratings for Illinois Soil by K.R. Olson and J.M. Lang, Office of Research, ACES, University of Illinois at Champaign-Urbana. Version: 1/2/2012 Amended Table S2 B811

Crop yields and productivity indices for optimum management (B811) are maintained at the following NRES web site:

<https://www.ideals.illinois.edu/handle/2142/1027/>

** Indexes adjusted for slope and erosion according to Bulletin 811 Table S3

Soils data provided by USDA and NRCS. Soils data provided by University of Illinois at Champaign-Urbana.

*c: Using Capabilities Class Dominant Condition Aggregation Method