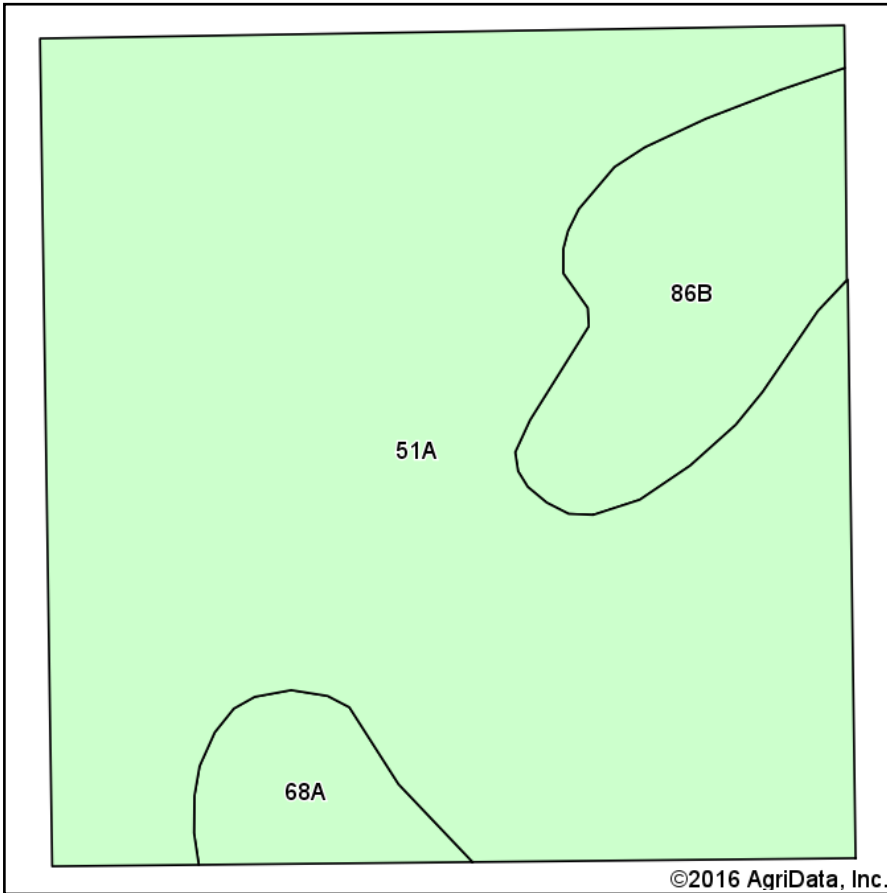
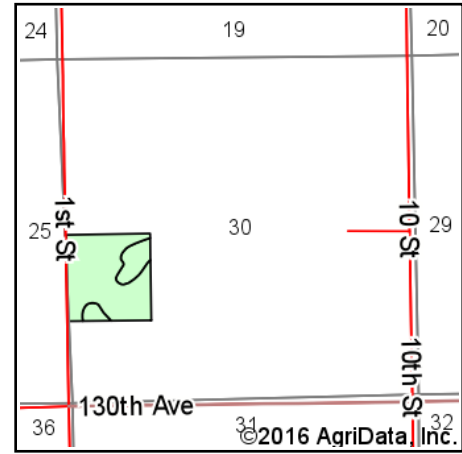


Soils Map



Soils data provided by USDA and NRCS.



State: **Illinois**
 County: **Warren**
 Location: **30-10N-3W**
 Township: **Tompkins**
 Acres: **40**
 Date: **9/27/2016**

VAN ADKISSON
 AUCTION SERVICE LLC
 ROSEVILLE, IL 61473 - PH: (309)426-2000
 www.bladdersandbuyers.com
 IL License #440.000120

Maps Provided By:



Area Symbol: IL187, Soil Area Version: 9

Code	Soil Description	Acres	Percent of field	Il. State Productivity Index Legend	Corn Bu/A	Soybeans Bu/A	Crop productivity index for optimum management
51A	Muscataune silt loam, 0 to 2 percent slopes	32.68	81.7%		200	64	147
**86B	Osco silt loam, 2 to 5 percent slopes	5.35	13.4%		**189	**59	**140
68A	Sable silty clay loam, 0 to 2 percent slopes	1.97	4.9%		192	63	143
Weighted Average					198.1	63.3	145.9

Area Symbol: IL187, Soil Area Version: 9

Table: Optimum Crop Productivity Ratings for Illinois Soil by K.R. Olson and J.M. Lang, Office of Research, ACES, University of Illinois at Champaign-Urbana. Version: 1/2/2012 Amended Table S2 B811

Crop yields and productivity indices for optimum management (B811) are maintained at the following NRES web site:
<https://www.ideals.illinois.edu/handle/2142/1027/>

** Indexes adjusted for slope and erosion according to Bulletin 811 Table S3

Soils data provided by USDA and NRCS. Soils data provided by University of Illinois at Champaign-Urbana.

*c: Using Capabilities Class Dominant Condition Aggregation Method